

MONTHLY MEMBERSHIP PROGRESS REPORT

LOCATION INDIA

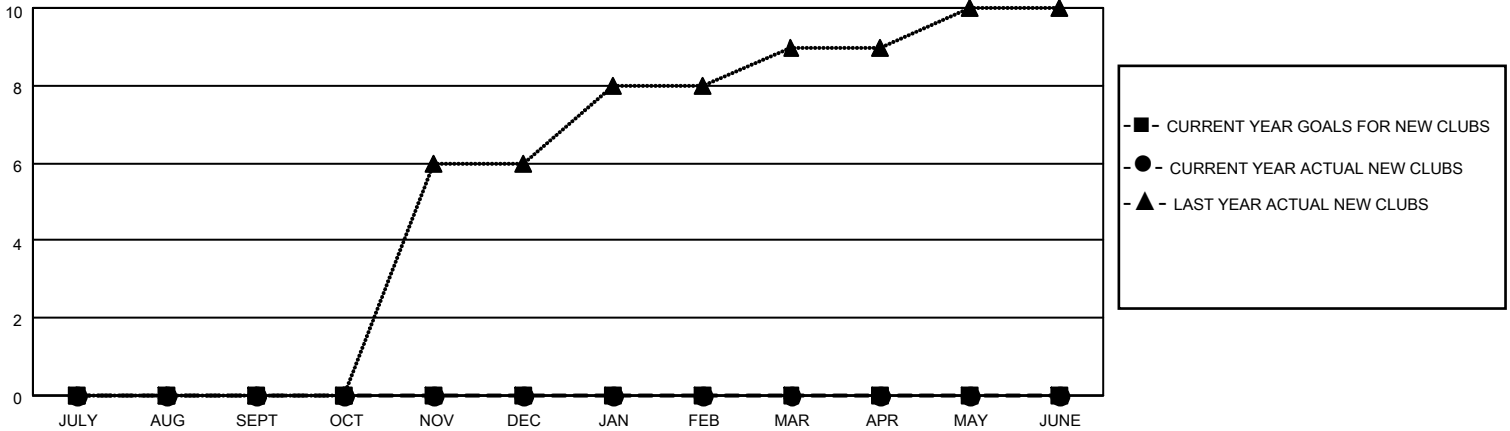
District 316 H

Results as of: 6/30/2023

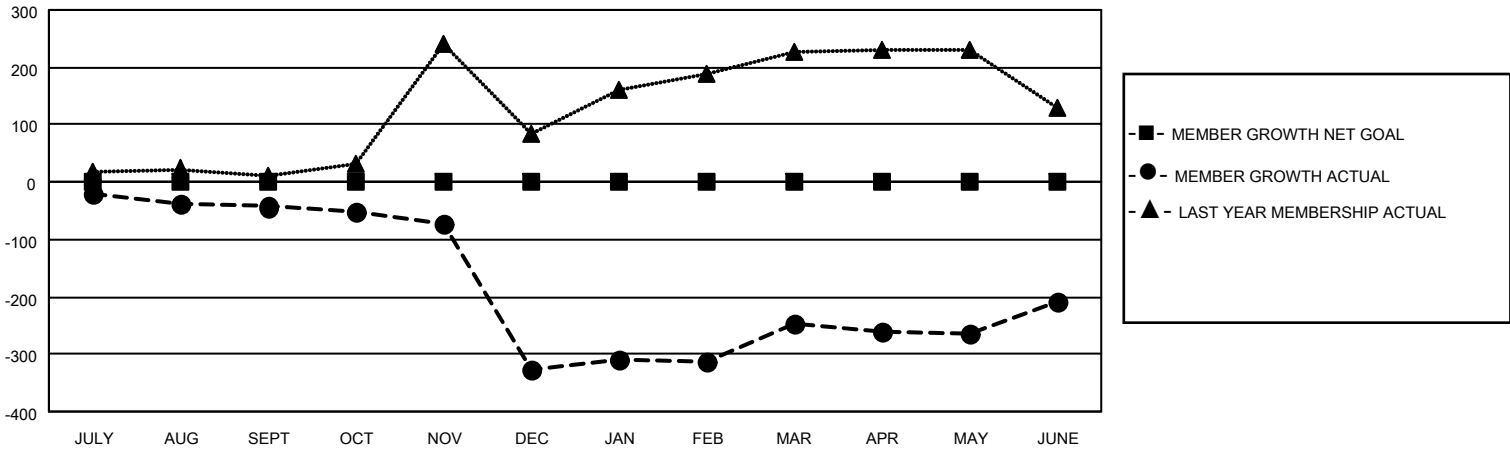
Clubs			
RESULTS FOR 2022-2023			
QUARTER	NEW CLUB GOAL	NEW CLUBS	DROPPED CLUBS
JULY/AUG/SEPT	0	0	2
OCT/NOV/DEC	0	0	9
JAN/FEB/MAR	0	0	0
APR/MAY/JUNE	0	0	2

Members			
RESULTS FOR 2022-2023			
QUARTER	MEMBER GROWTH NET GOAL	MEMBER GROWTH ACTUAL	DROPPED MEMBERS ACTUAL (including transfers)
JULY/AUG/SEPT	0	8	47
OCT/NOV/DEC	0	6	288
JAN/FEB/MAR	0	146	15
APR/MAY/JUNE	0	214	163

GOALS AND ACTUAL NEW CLUBS CUMULATIVE



GOALS AND ACTUAL MEMBERS CUMULATIVE



DROPPED CLUBS: 13

27 CLUBS OF 54 ADDED 1 OR MORE NEW MEMBERS

GENDER DISTRIBUTION

MALE	1,197 (78.80%)
FEMALE	322 (21.20%)
NON BINARY	0 (0.00%)
PREFER NOT TO ANSWER	0 (0.00%)

DROPPED MEMBERS

[CLICK HERE FOR CUMULATIVE MEMBERSHIP DATA](#)

DECEASED	9
CLUB CANCELLED	275
OTHER	229
TOTAL	513

TOTAL FAMILY UNIT MEMBERS 149

FAMILY MEMBERS PAYING HALF DUES 84